

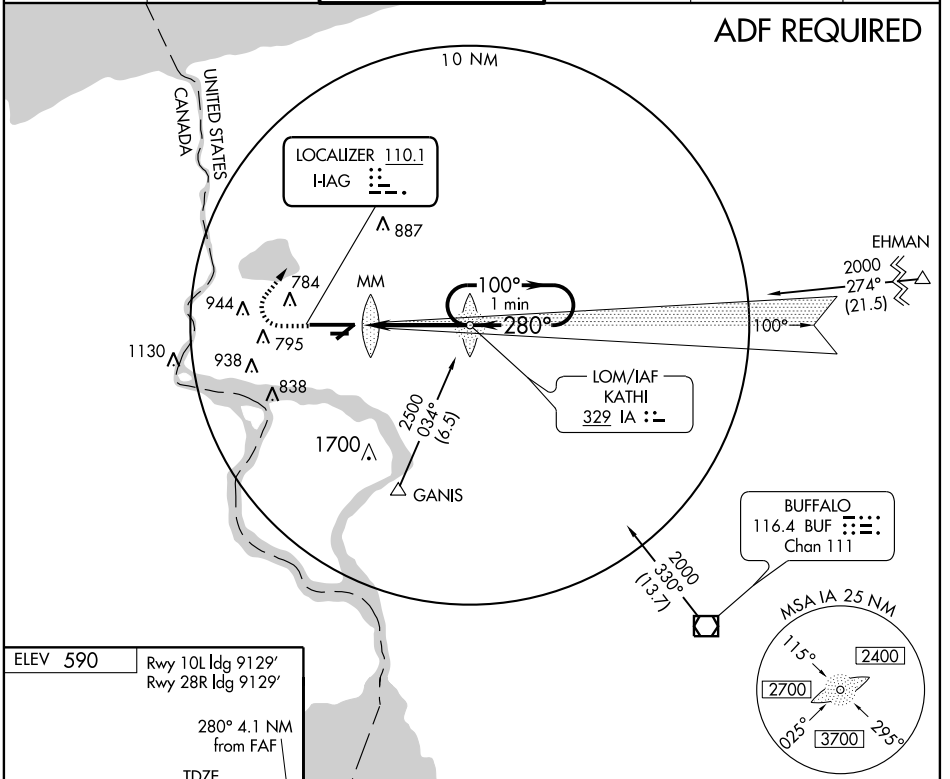
LOC I- IAG	APP CRS 280°	Rwy ldg TDZE Apt Elev	9129 588 590
-------------------	------------------------	-----------------------------	---

ILS RWY 28R
NIAGARA FALLS INTL (IAG)

	SSALR 	MISSED APPROACH: Climb to 1200, then climbing right turn to 3200 via heading 050°, then direct IA LOM and hold.
--	-----------	---

ATIS 120.8 269.4	BUFFALO APP CON 126.5 317.6	NIAGARA TOWER★ 118.5 (CTAF) 349.0	GND CON 121.7 275.8	CLNC DEL 119.25 251.1	UNICOM 122.95
----------------------------	---------------------------------------	---	-------------------------------	---------------------------------	-------------------------

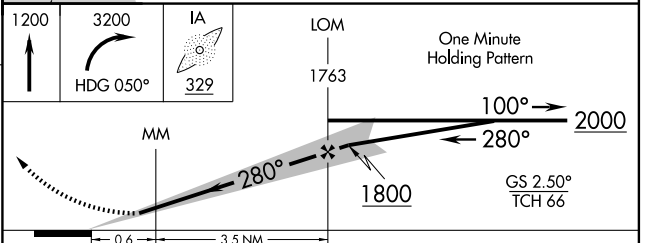
ADF REQUIRED



NE-2, 01 SEP 2005 to 29 SEP 2005

NE-2, 01 SEP 2005 to 29 SEP 2005

ELEV 590	Rwy 10L ldg 9129'	Rwy 28R ldg 9129'			
280° 4.1 NM from FAF					
TDZE 588					
MIRL Rwy 6-24 and 10R-28L					
FAF to MAP 4.1 NM					
Knots	60	90	120	150	180
Min:Sec	4:06	2:44	2:03	1:38	1:22



CATEGORY	A	B	C	D
S-ILS 28R	788/24 200 (200-½)			
S-LOC 28R	900/24 312 (400-½)			900/40 312 (400-¾)
CIRCLING	1100-1 510 (600-1)	1100-1½ 510 (600-1½)		1180-2 590 (600-2)