

MIDDLETON, WISCONSIN

AL-6171 (FAA)

VOR-A

MIDDLETON MUNI - MOREY FIELD (C29)

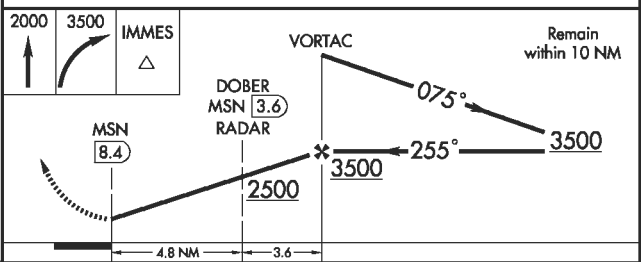
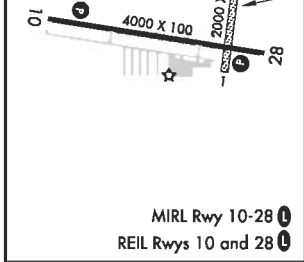
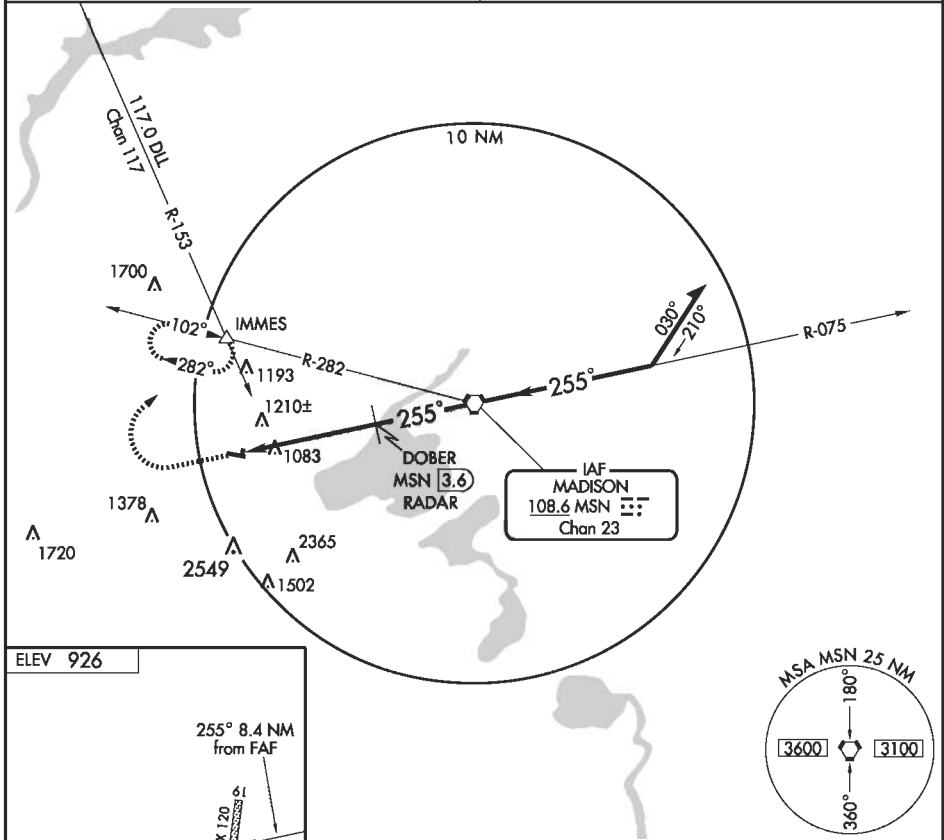
VORTAC MSN 108.6 Chan 23	APP CRS 255°	Rwy Idg TDZE Apt Elev N/A N/A 926
--	------------------------	---

⚠ Use Madison/Dane County Regional-Truax Field altimeter setting.
⚠ NA DME OR RADAR REQUIRED

MISSED APPROACH: Climb to 2000 then climbing right turn to 3500 direct IMMES Int and hold.

MADISON APP CON ★
135.45 343.7

UNICOM
123.0 (CTAF) ①



FAF to MAP 8.4 NM					
Knots	60	90	120	150	180
Min:Sec	8:24	5:36	4:12	3:22	2:48
CATEGORY	A		B		C
CIRCLING	1560-1		634 (700-1)		1580-1½ 654 (700-1½)
					NA

MIDDLETON, WISCONSIN
Orig 05244

43° 07'N-89° 32'W

MIDDLETON MUNI - MOREY FIELD (C29)

VOR-A

EC-3, 01 SEP 2005 to 29 SEP 2005

EC-3, 01 SEP 2005 to 29 SEP 2005